



## AT A GLANCE

### African American Students at the University of Arizona

Multicultural Affairs and Student Success • PO Box 210040 • Tucson AZ 85721-0040 • (520) 621-1094

#### ENROLLMENT <sup>1, 2</sup>

Level	Number		% Known Race/ Ethnicity University Enrollment by Level	% Total University Enrollment by Level
Fall 2007 Headcount, African Americans	1,142	(37,217)	3.2%	3.1%
Undergraduate	965	(29,070)	3.5%	3.3%
Freshman	311	(7,542)	4.2%	4.1%
New Freshmen	268	(6,569)	4.2%	4.1%
New Freshmen AZ Residents	188	(4,124)	4.7%	4.6%
New Transfer	65	(1,913)	3.6%	3.4%
Sophomore	190	(6,045)	3.3%	3.1%
Sophomore AZ Residents	120	(3,907)	3.2%	3.1%
Junior	190	(6,343)	3.1%	3.0%
Junior AZ Residents	131	(4,548)	3.0%	2.9%
Senior	246	(8,740)	3.0%	2.8%
Senior AZ Residents	218	(6,795)	3.4%	3.2%
Graduate & Professional	177	(8,147)	2.4%	2.2%
Graduate	156	(6,870)	2.5%	2.3%
Professional	21	(1,277)	1.8%	1.6%
Law	9	(458)	2.3%	2.0%
Medicine	9	(484)	2.1%	1.9%
Pharmacy	3	(335)	0.9%	0.9%

#### Fall 2007 Undergraduate Enrollment by Top Three Colleges

College	Number	% Total African American Undergraduates
College of Social and Behavioral Sciences	235	24.4%
University College	170	17.6%
College of Business and Public Administration	121	12.5%

#### PERSISTENCE RATES <sup>1, 2</sup>

First Year Retention Rate, (i.e. Fall 2006 Cohort Returning Fall 2007)	77.0%	(80.0%)
Average, First Year Retention Rate, 1988-2006	71.8%	(77.1%)
Average, Second Year Retention Rate, 1988-2005	57.9%	(66.4%)

#### GRADUATION <sup>1, 2</sup>

#### Rates, First Time, Full Time Freshmen

4-yr. Graduation Rate, 2003 entering cohort	22.0%	(32.0%)
4-yr. Average Graduation Rate, 1988-2003	14.7%	(26.1%)
5-yr. Average Graduation Rate, 1988-2002	32.0%	(48.5%)
6-yr. Average Graduation Rate, 1988-2001	38.6%	(54.2%)

#### 2006-07 Graduates by Degree Level

Degree	Number	% Total Degrees by Level
Bachelors	140 (5,568)	2.5%
Masters	27 (1,382)	2.0%
Doctorate	5 (461)	1.1%
Professional	8 (354)	2.3%

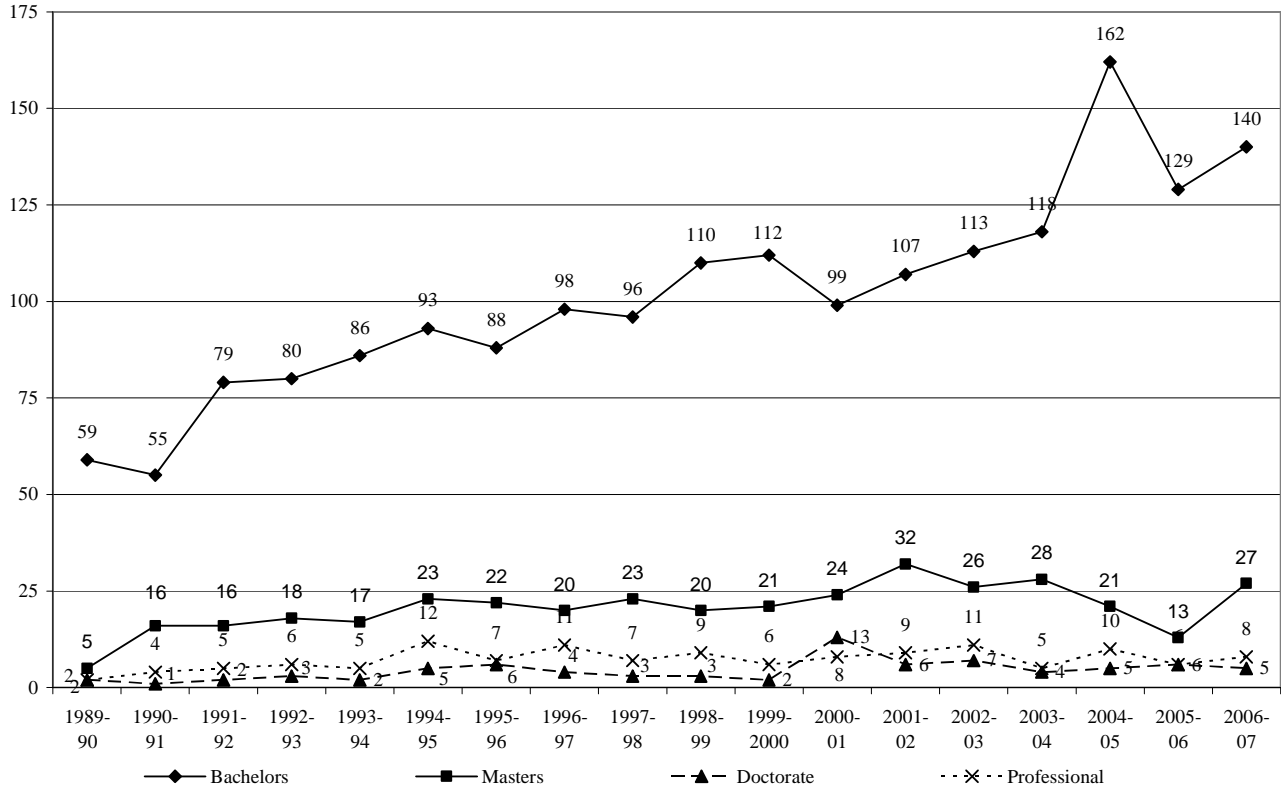
#### 2006-07 Baccalaureates by Top Three Colleges

College of	Number	% Total African Americans
Social and Behavioral Sciences	49	35.0%
Education	14	10.0%
Science	12	8.6%

<sup>1</sup> Source: UA Institutional Research & Planning Support.

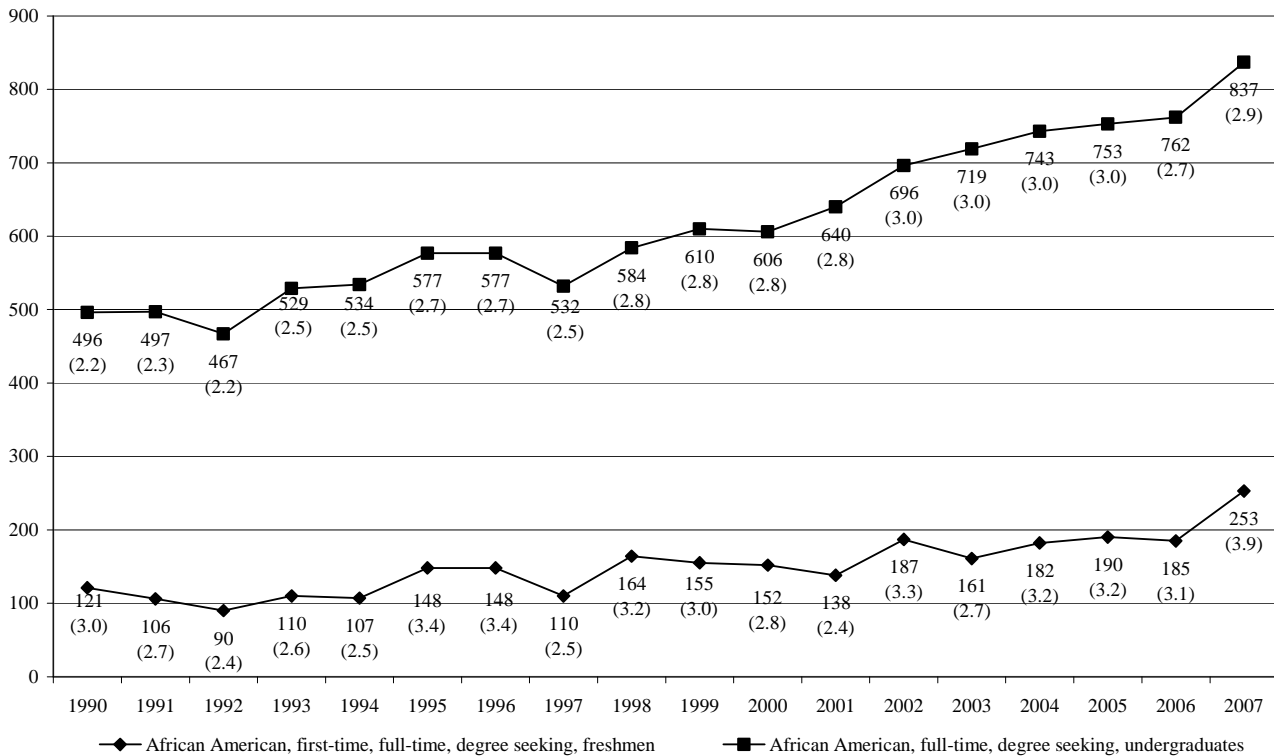
<sup>2</sup> Values in parenthesis indicate total University number or percent.

**Number of Degrees Awarded to African Americans at the University of Arizona by Level, 1990-2007**



Source: UA DAPS Fact Books

**Number (and Percent) Degree Seeking, Full Time African American Students Enrolled at the University of Arizona, 1990-2007**



Source: IPEDS data

**ACADEMIC PERFORMANCE OF FULL-TIME UNDERGRADUATES** <sup>3, 4, 5</sup>

Academic Probation, Spring 2008

Dean's List, Spring 2008

Classification	% of All Probation Students by Classification	% of African Americans by Classification	Classification	% All Dean's List Students by Classification	% of African Americans by Classification
Overall	6.2%	9.7%	Overall	0.8%	4.9%
Freshman	7.3%	10.6%	Freshman	1.4%	1.3%
Sophomore	6.3%	15.3%	Sophomore	0.8%	2.6%
Junior	8.2%	15.3%	Junior	0.9%	5.3%
Senior	1.2%	1.2%	Senior	0.8%	11.4%

Grade Point Average, Spring 2008

GPA	% of African Americans	GPA	% of African Americans	GPA	% of African Americans
3.50 - 4.00	17.9%	2.50 - 2.99	16.5%	< 2.00	27.0%
3.00 - 3.49	21.8%	2.00 - 2.49	16.9%		

<sup>3</sup> Based on data from UIS.

<sup>4</sup> Based on end of spring 2008 data.

<sup>5</sup> Does not include unclassified students.