



## AT A GLANCE

### Asian American Students at the University of Arizona

Multicultural Affairs and Student Success • PO Box 210040 • Tucson AZ 85721-0040 • (520) 621-1094

#### ENROLLMENT <sup>1, 2</sup>

Level	Number		% Known Race/ Ethnicity	% Total University Enrollment by Level
			University Enrollment by Level	
Fall 2007 Headcount, Asian Americans	2,201	(37,217)	6.3%	5.9%
Undergraduate	1,786	(29,070)	6.4%	6.1%
Freshman	475	(7,542)	6.5%	6.3%
New Freshmen	421	(6,569)	6.6%	6.4%
New Freshmen AZ Residents	308	(4,124)	7.6%	7.5%
New Transfer	72	(1,913)	3.9%	3.8%
Sophomore	356	(6,045)	6.1%	5.9%
Sophomore AZ Residents	246	(3,907)	6.5%	6.3%
Junior	415	(6,343)	6.8%	6.5%
Junior AZ Residents	329	(4,548)	7.5%	7.2%
Senior	529	(8,740)	6.4%	6.1%
Senior AZ Residents	444	(6,795)	6.9%	6.5%
Graduate & Professional	415	(8,147)	5.6%	5.1%
Graduate	266	(6,870)	4.3%	3.9%
Professional	149	(1,277)	13.0%	11.7%
Law	26	(458)	6.7%	5.7%
Medicine	62	(484)	14.4%	12.8%
Pharmacy	61	(335)	18.7%	18.2%

#### Fall 2007 Undergraduate Enrollment by Top Three Colleges

College	Number	% Total Asian American Undergraduates
College of Science	317	17.7%
University College	300	16.8%
College of Business and Public Administration	269	15.1%

#### PERSISTENCE RATES <sup>1, 2</sup>

First Year Retention Rate, (i.e. Fall 2006 Cohort Returning Fall 2007)	85.0%	(80.0%)
Average, First Year Retention Rate, 1988-2006	82.4%	(77.1%)
Average, Second Year Retention Rate, 1988-2005	77.8%	(66.4%)

#### GRADUATION <sup>1, 2</sup>

##### Rates, First Time, Full Time Freshmen

4-yr. Graduation Rate, 2003 entering cohort	34.0%	(32.0%)
4-yr. Average Graduation Rate, 1988-2003	27.6%	(26.1%)
5-yr. Average Graduation Rate, 1988-2002	49.2%	(48.5%)
6-yr. Average Graduation Rate, 1988-2001	57.9%	(54.2%)

##### 2006-07 Graduates by Degree Level

Degree	Number	% Total Degrees by Level
Bachelors	324 (5,568)	5.8%
Masters	54 (1,382)	3.9%
Doctorate	11 (461)	2.4%
Professional	38 (354)	10.7%

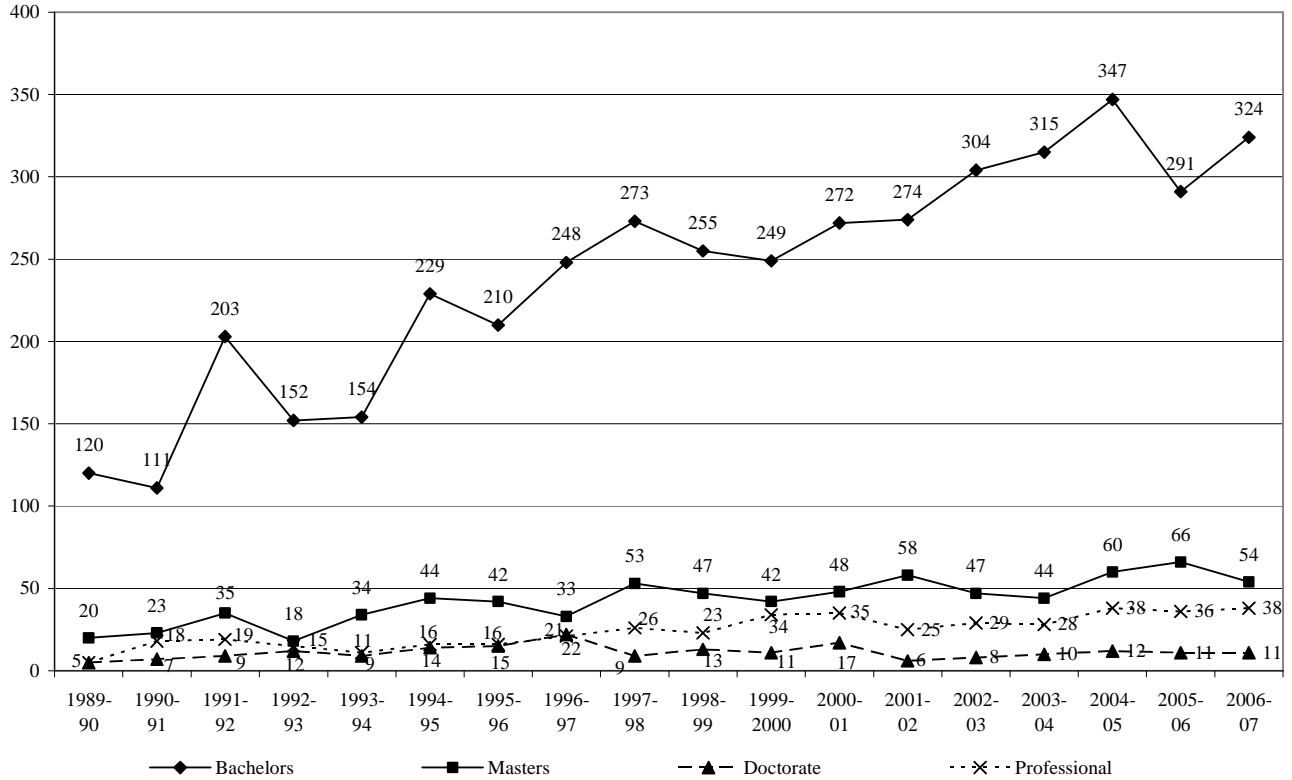
##### 2006-07 Baccalaureates by Top Three Colleges

College of	Number	% Total Asian Americans
Social and Behavioral Sciences	70	21.6%
Science	63	19.4%
Business and Public Administration	48	14.8%

<sup>1</sup> Source: UA Institutional Research & Planning Support.

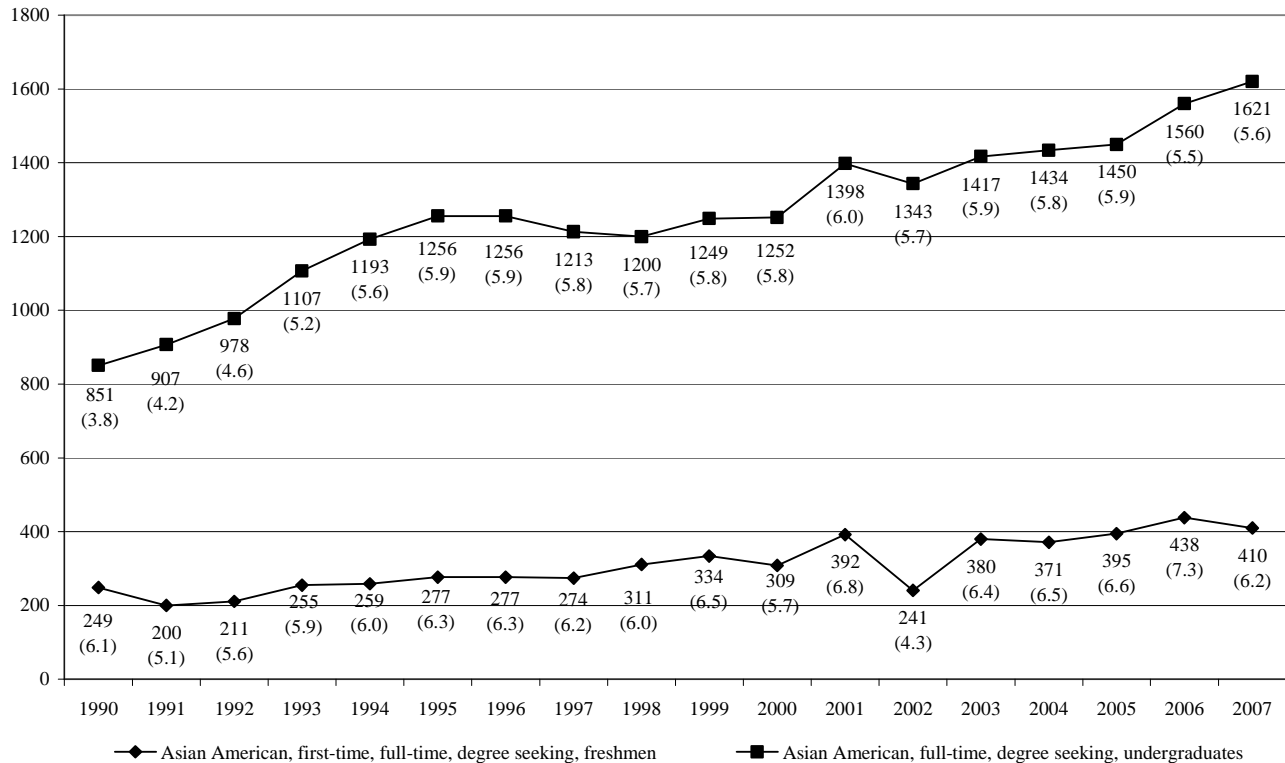
<sup>2</sup> Values in parenthesis indicate total University number or percent.

**Number of Degrees Awarded to Asian Americans at the University of Arizona by Level, 1990-2007**



Source: UA DAPS Fact Books

**Number (and Percent) Degree Seeking, Full Time Asian American Students Enrolled at the University of Arizona, 1990-2007**



Source: IPEDS data

**ACADEMIC PERFORMANCE OF FULL-TIME UNDERGRADUATES** <sup>3, 4, 5</sup>

Academic Probation, Spring 2008

Dean's List, Spring 2008

Classification	% of All Probation Students by Classification	% of Asian Americans by Classification	Classification	% All Dean's List Students by Classification	% of Asians Americans by Classification
Overall	6.4%	5.4%	Overall	9.2%	28.6%
Freshman	6.7%	6.3%	Freshman	11.0%	6.5%
Sophomore	6.7%	8.7%	Sophomore	5.9%	11.0%
Junior	4.0%	3.4%	Junior	12.6%	33.5%
Senior	8.5%	4.2%	Senior	8.6%	57.1%

Grade Point Average, Spring 2008

GPA	% of Asian Americans	GPA	% of Asian Americans	GPA	% of Asian Americans
3.50 - 4.00	34.6%	2.50 - 2.99	14.5%	< 2.00	15.2%
3.00 - 3.49	25.1%	2.00 - 2.49	10.5%		

<sup>3</sup> Based on data from UIS.

<sup>5</sup> Does not include unclassified students.

<sup>4</sup> Based on end of spring 2008 data.