



AT A GLANCE

Native American Students at the University of Arizona

Multicultural Affairs and Student Success • PO Box 210040 • Tucson AZ 85721-0040 • (520) 621-1094

ENROLLMENT ^{1, 2}

Level	Number	% Known Race/ Ethnicity University Enrollment by Level	% Total University Enrollment by Level
Fall 2007 Headcount, Native Americans	940	(37,217)	2.7%
Undergraduate	700	(29,070)	2.4%
Freshman	234	(7,542)	3.1%
New Freshmen	208	(6,569)	3.2%
New Freshmen AZ Residents	166	(4,124)	4.0%
New Transfers	70	(1,913)	3.7%
Sophomore	137	(6,045)	2.3%
Sophomore AZ Residents	108	(3,907)	2.8%
Junior	124	(6,343)	2.0%
Junior AZ Residents	110	(4,548)	2.4%
Senior	199	(8,740)	2.3%
Senior AZ Residents	186	(6,795)	2.7%
Graduate & Professional	240	(8,147)	2.9%
Graduate	201	(6,870)	2.9%
Professional	39	(1,277)	3.1%
Law	27	(458)	5.9%
Medicine	10	(484)	2.1%
Pharmacy	2	(335)	0.6%

Fall 2007 Undergraduate Enrollment by Top Three Colleges

College	Number	% Total Native American Undergraduates
College of Social and Behavioral Sciences	147	21.0%
University College	113	16.1%
College of Science	81	11.6%

PERSISTENCE RATES ^{1, 2}

First Year Retention Rate, (i.e. Fall 2006 Cohort Returning Fall 2007)	64.0%	(80.0%)
Average, First Year Retention Rate, 1988-2006	59.8 %	(77.1%)
Average, Second Year Retention Rate, 1988-2005	45.6%	(66.4%)

GRADUATION ^{1, 2}

Rates, First Time, Full Time Freshmen

4-yr. Graduation Rate, 2003 entering cohort	16.0%	(32.0%)
4-yr. Average Graduation Rate, 1988-2003	4.8%	(26.1%)
5-yr. Average Graduation Rate, 1988-2002	19.4%	(48.5%)
6-yr. Average Graduation Rate, 1988-2001	25.5%	(54.2%)

2006-07 Graduates by Degree Level

Degree	Number	% Total Degrees by Level
Bachelors	87 (5,568)	1.6%
Masters	27 (1,382)	2.0%
Doctorate	9 (461)	2.0%
Professional	8 (354)	2.2%

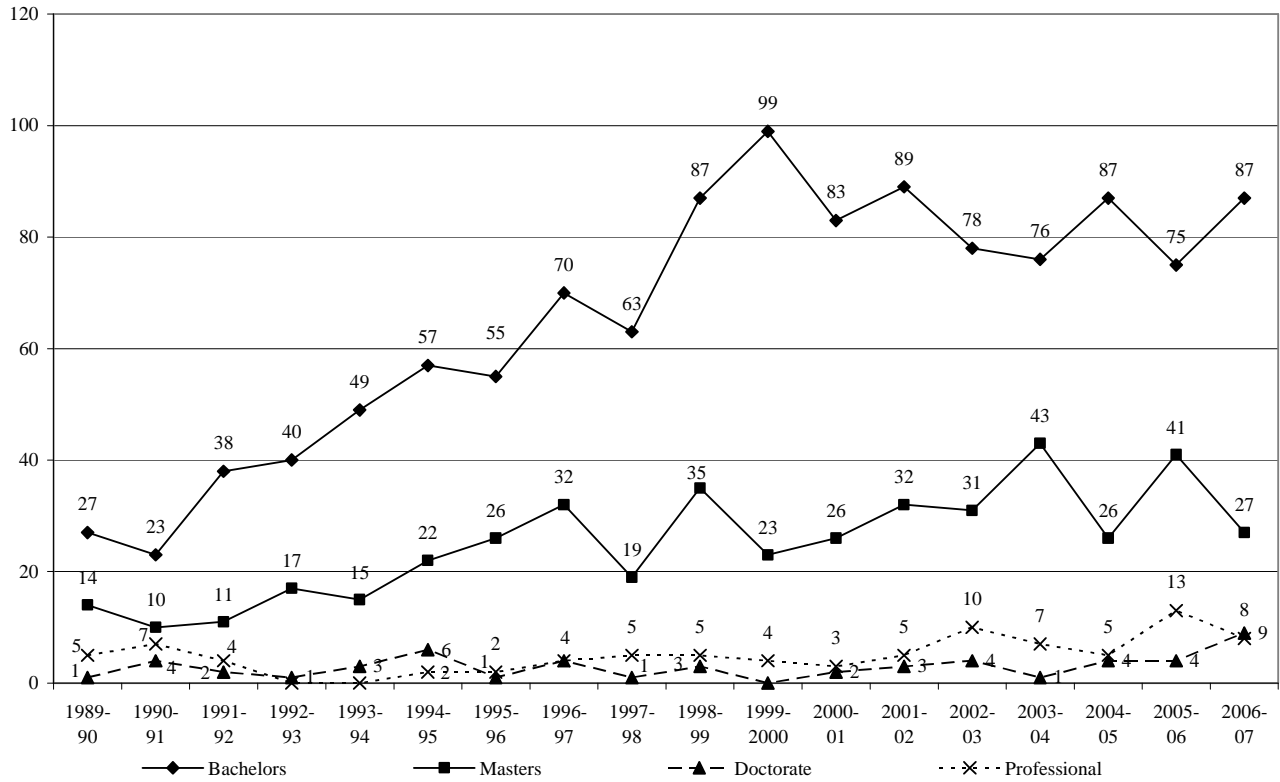
2006-07 Baccalaureates by Top Three Colleges

College of	Number	% Total Native Americans
Social and Behavioral Sciences	27	31.0%
Science	11	12.6%
Business and Public Administration	11	12.6%

¹ Source: UA Institutional Research & Planning Support.

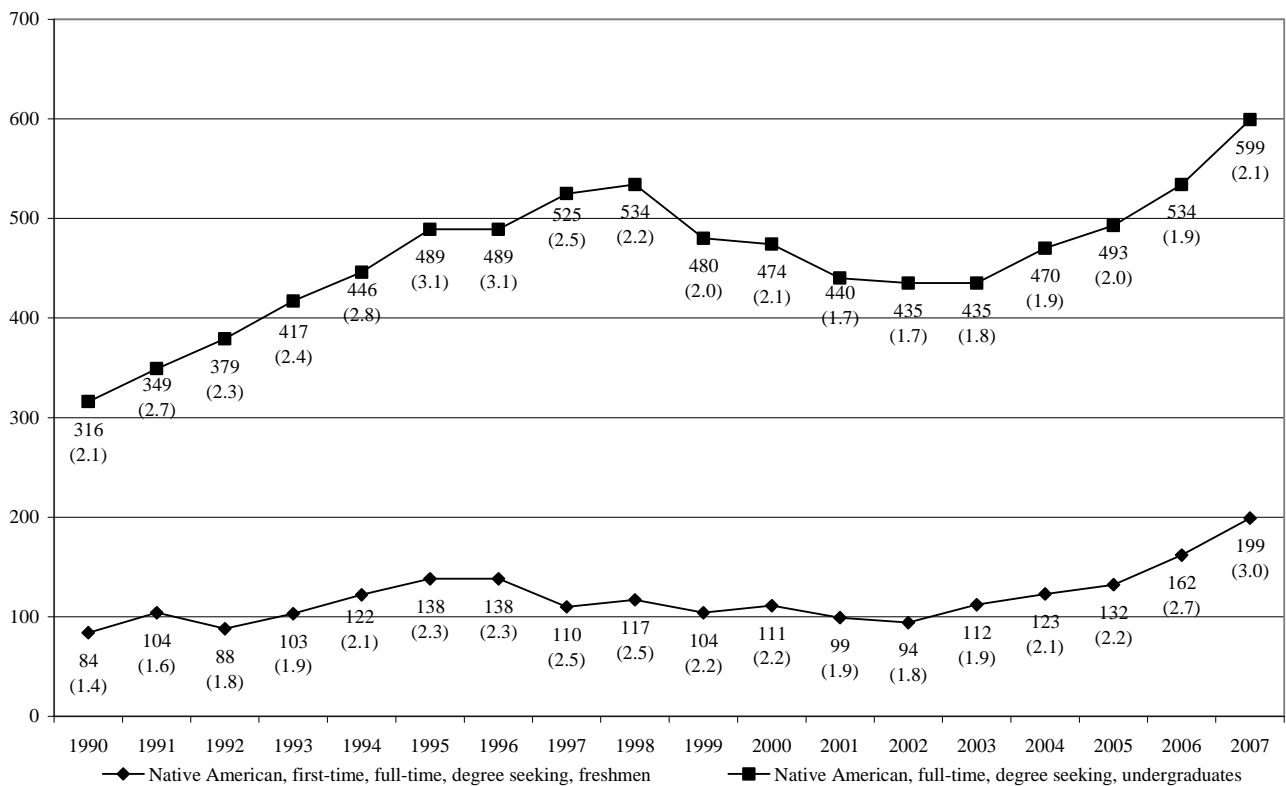
² Values in parenthesis indicate total University number or percent.

Number of Degrees Awarded to Native Americans at the University of Arizona by Level, 1990-2007



Source: UA DAPS Fact Books

Number (and Percent) Degree Seeking, Full Time Native American Students Enrolled at the University of Arizona, 1990-2007



Source: IPEDS data

ACADEMIC PERFORMANCE OF FULL-TIME UNDERGRADUATES ^{3, 4, 5}

Academic Probation, Spring 2008

Dean's List, Spring 2008

Classification	% of All Probation Students by Classification	% of Native Americans by Classification	Classification	% All Dean's List Students by Classification	% of Native Americans by Classification
Overall	4.5%	9.7%	Overall	0.6%	4.9%
Freshman	4.9%	9.4%	Freshman	2.1%	2.6%
Sophomore	3.7%	12.4%	Sophomore	1.2%	5.8%
Junior	4.8%	13.7%	Junior	0.6%	5.6%
Senior	4.6%	6.0%	Senior	0.4%	6.5%

Grade Point Average, Spring 2008

GPA	% of Native Americans	GPA	% of Native Americans	GPA	% of Native Americans
3.50 - 4.00	22.6%	2.50 - 2.99	15.5%	< 2.00	28.7%
3.00 - 3.49	18.1%	2.00 - 2.49	15.0%		

³ Based on data from UIS.

⁵ Does not include unclassified students.

⁴ Based on end of spring 2008 data.