

newstart

S U M M E R P R O G R A M

Judy Marquez Kiyama

Melissa Ousley, Ph.D.

Kendal Washington White

October 15, 2007

Tomas Rivera Policy Institute



History

Original Purpose

- “To facilitate the admission, transition, and retention, through individualized and group means, of two-hundred (200) economically disadvantaged students, including Mexican American, Black American, American Indian, and Anglo students at the University of Arizona.” (New Start Preliminary Proposal, 1970).
- Pilot program conducted in 1969
 - 84 pre-freshmen
 - 72 of 84 enrolled at the University of Arizona



Review of Similar Summer Bridge Programs

Program Themes

- One of the oldest and most commonly recommended strategies to improve college retention among under-represented students (Garcia, 1991)
- Redefinition of program criteria
- Cost for students significantly lower than true cost
- Based on high expectations of students, high levels of challenge and support, and academic and social experiences
- Summer bridge programs do not operate as remedial programs (Martinez & Martinez, 2004)



Demographics

<u>Ethnic Background</u>	<u>Total '07</u>	<u>Total '06</u>
African American	27 (11%)	24
Asian Pacific American	15 (6%)	16
Hispanic	160 (65%)	160
Native American	20 (8%)	15
White	18 (7%)	18
Other	5 (2%)	8

Gender

Male	35%
Female	65%

Residency

Residential Students	52%
Tucson Commuter	48%
Non-Arizona	3.6%



Academic

Course Offerings

- English 101+: First-Year Composition
- English 101: First-Year Composition
- English 102: First-Year Composition
- Math 110: College Algebra
- Math 122: Intermediate Algebra
- Math 092: Elementary Algebra
- INDV 102: Many Ways of Being Human

Optional Course

- BioC 195e: Careers in Math and Science for Minority Professionals



Academic

Academic Conference

- “Power, Privilege and Difference”

The Academic Experience!

- Introduction to Social Science and Scientific Research
- Overview of Undergraduate Research Opportunities
- Preparation Workshops

Presidential Scholars



Academic

Campus Partners (to name a few....)

Office of New Student Orientation

Room & Course Scheduling

Office of Student Financial Aid

Scholarships Office

Minority Student Recruitment

Parking & Transportation Services

Dept. of English

Dept. of Mathematics

Dept. of Anthropology

Dept. of Biochemistry

Center for the Study of Higher Education

Pima Community College – Desert Vista Campus

Career Services

Campus Health Services

Residence Life

Registrar's Office

Bursar's Office



Residential

Benefits of a Living / Learning Community

- Roommate and wing design
- Wing meetings
- Courses and workshops in common
- Study center

Programming

- Hall Programs
- Formal and Informal Wing Programs
- Passive Programs



Orientation

Peer Advisor Workshops

- Academic skills, success strategies and resources
- Comprehensive orientation
- 18 peer advisor groups – by major

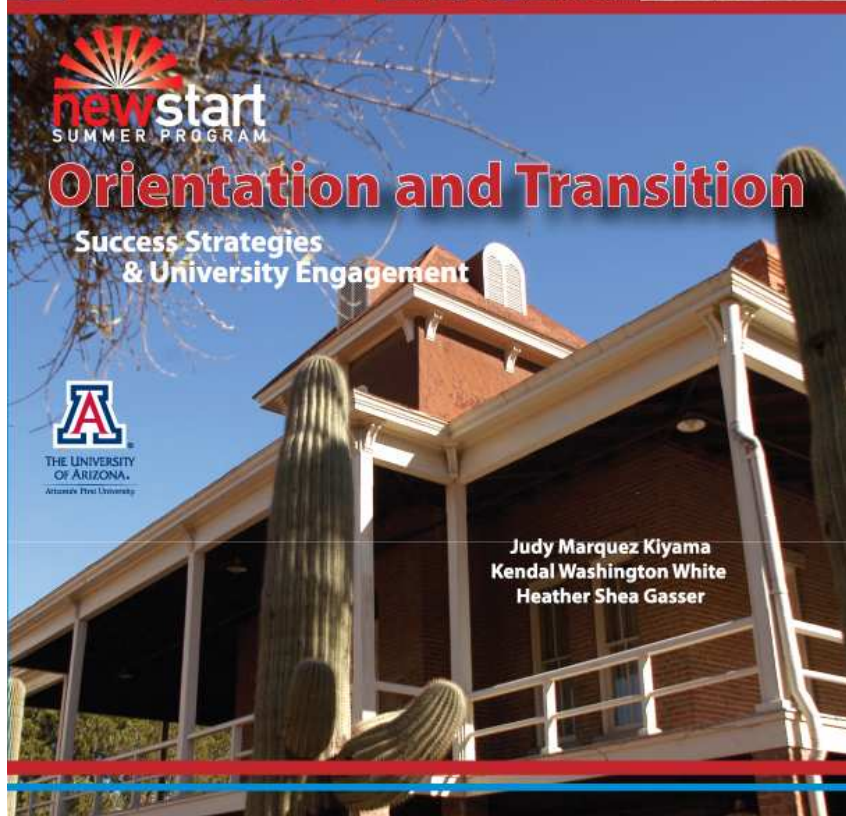
HED 197: Orientation and Transition: Engaging in strategies for a successful collegiate future

- Partnership with Higher Education
- Challenging students to begin to explore their own decision making processes, access to college and responsibility while in college

Maximum Educational Results in Two Semesters



Orientation



Leadership & Social Activities

Leadership Activities

- Involvement Fair
- Rising Sun
- Department sponsored events

Social Activities

- Monte Carlo
- B.L.A.S.T.
- Hall, Wing, and PA sponsored events



Research & Assessment

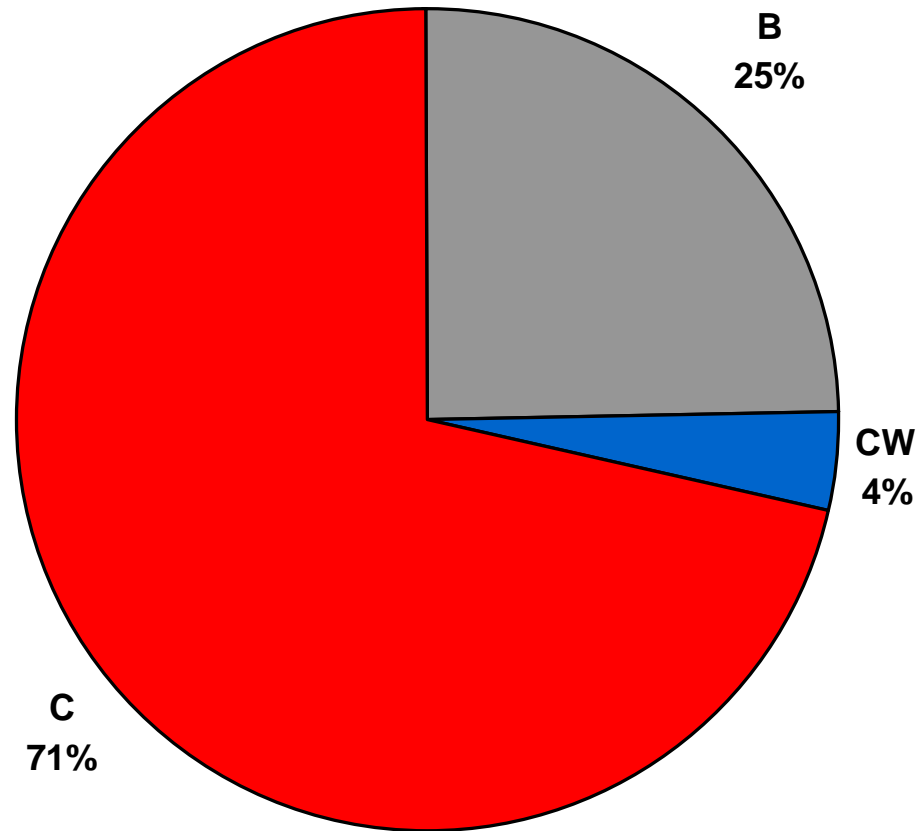
Study of Cohorts, 1993-2006

- Total records: 5970
- Average number of records per year: 426
- Analysis using descriptive statistics
 - Frequencies
 - Means
 - Chi Square



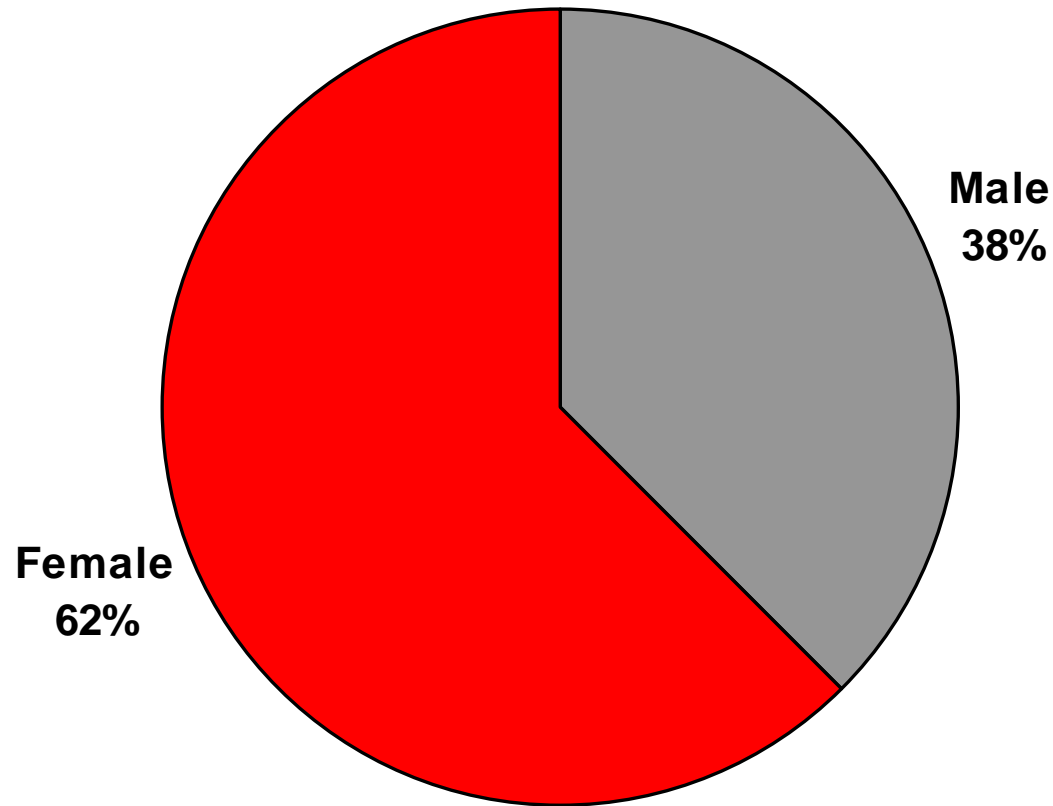
Research & Assessment

Demographics: Program Status



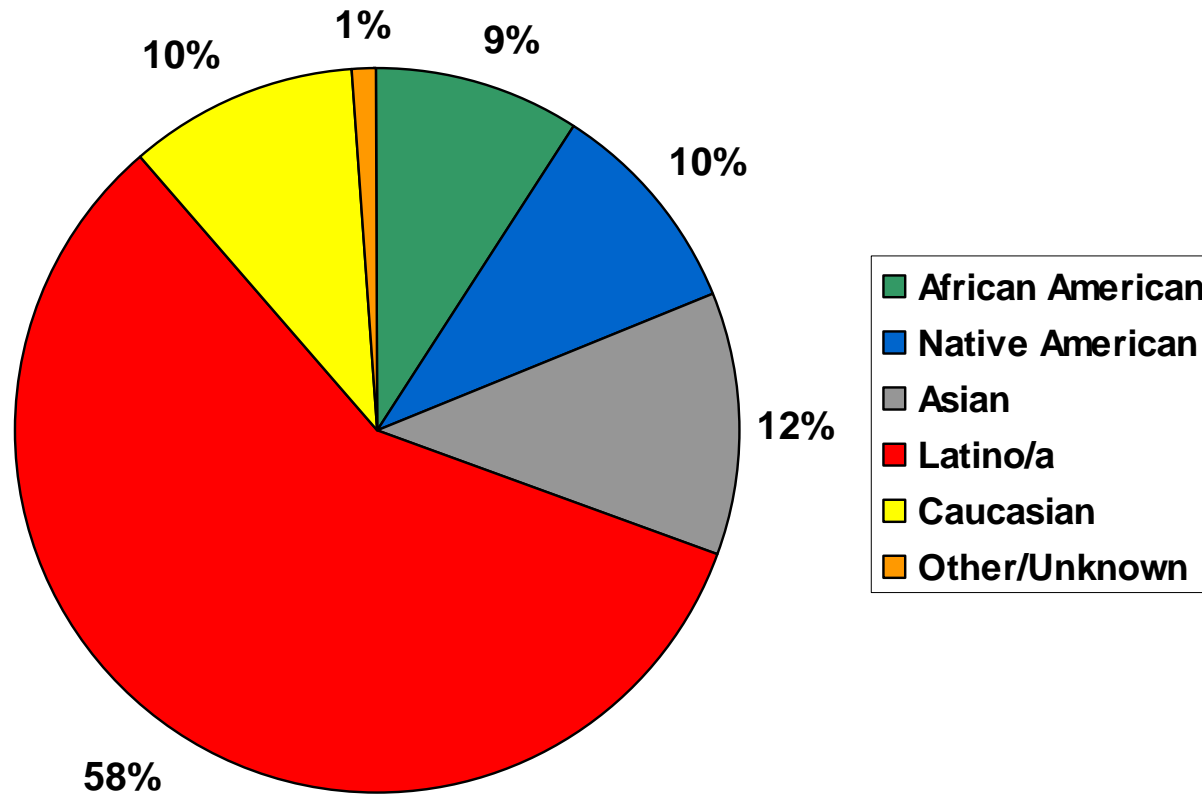
Research & Assessment

Demographics: Gender



Research & Assessment

Demographics: Ethnicity



Research & Assessment

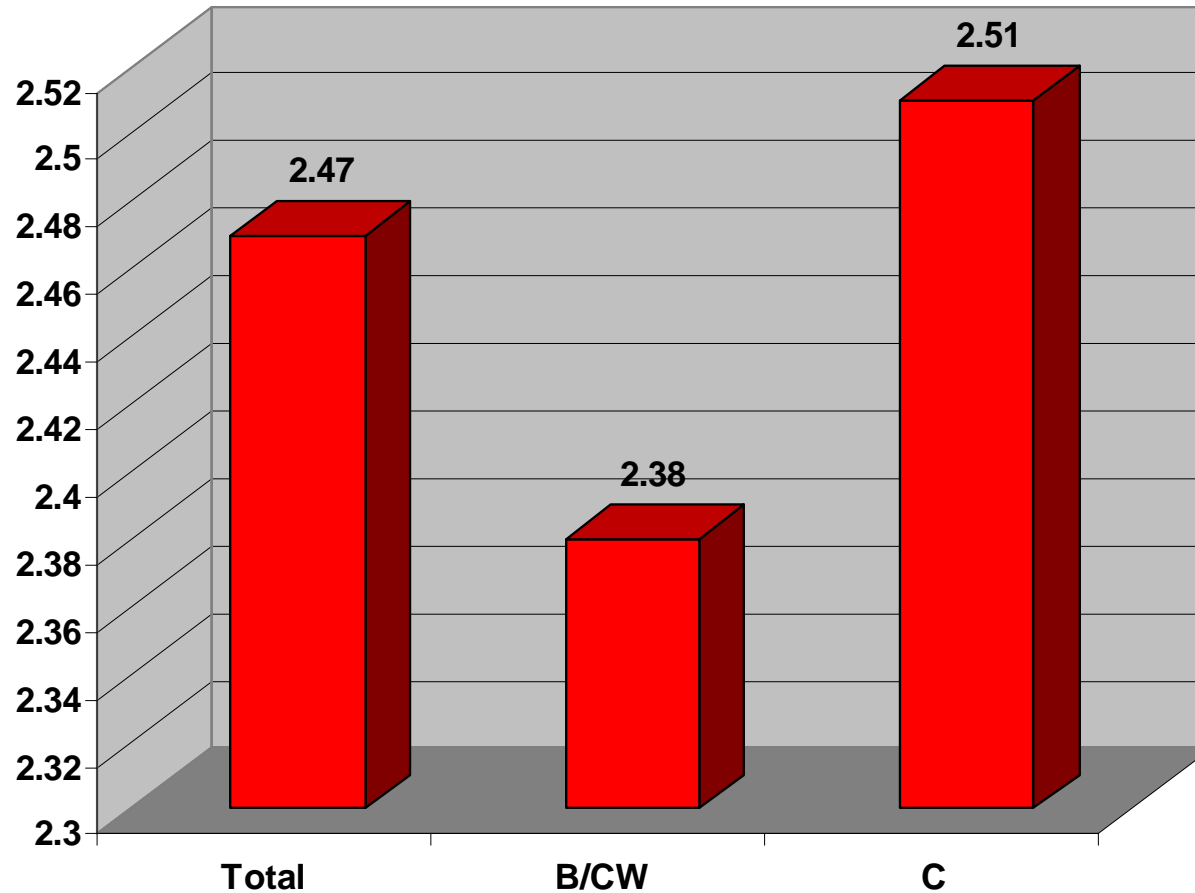
Residence Hall

- C and CW status students living in residence hall during program: 1911 (32.0%)
- More likely to be African American or Native American
- Latino/as more likely to be local, residing at home



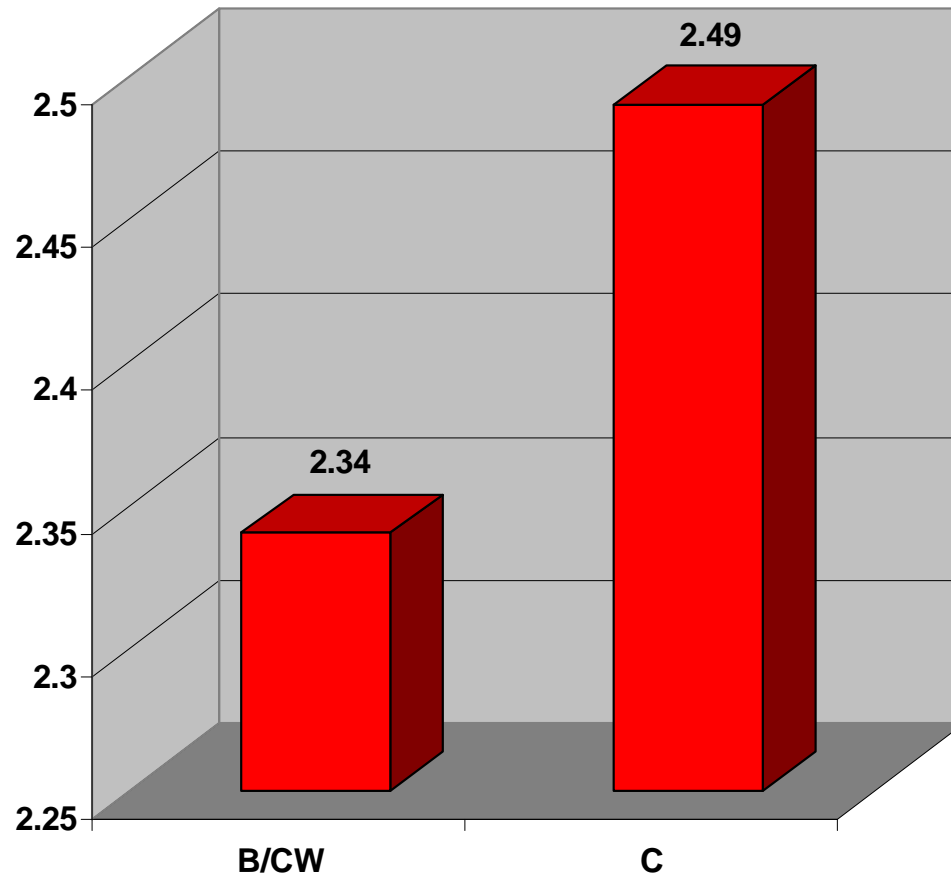
Research & Assessment

Average GPA



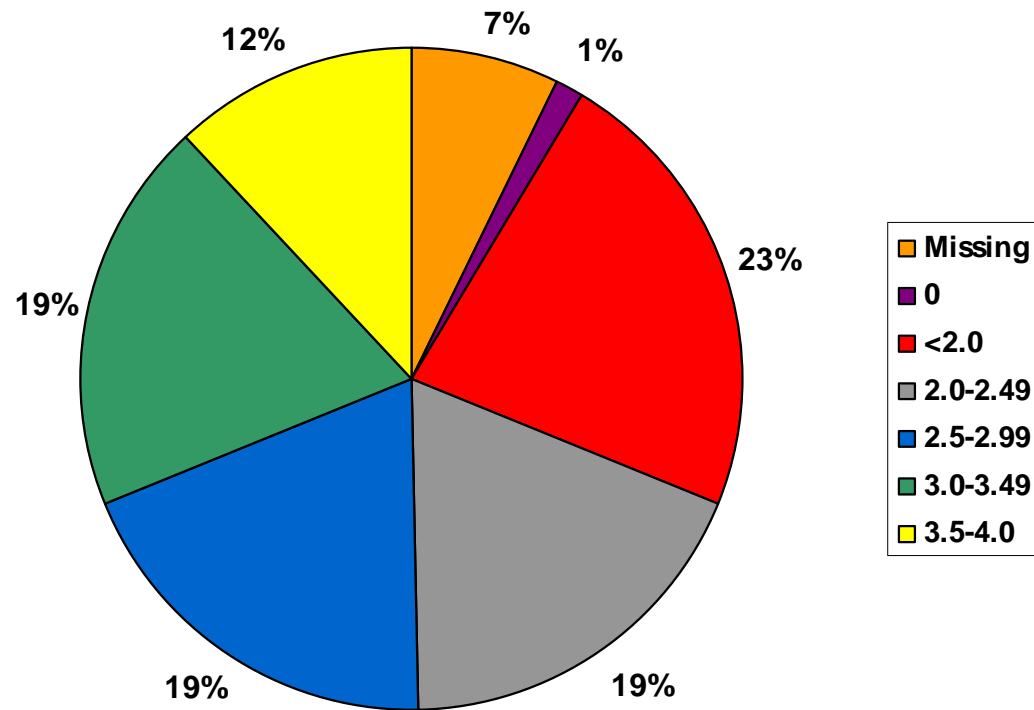
Research & Assessment

Latino/a Average GPA



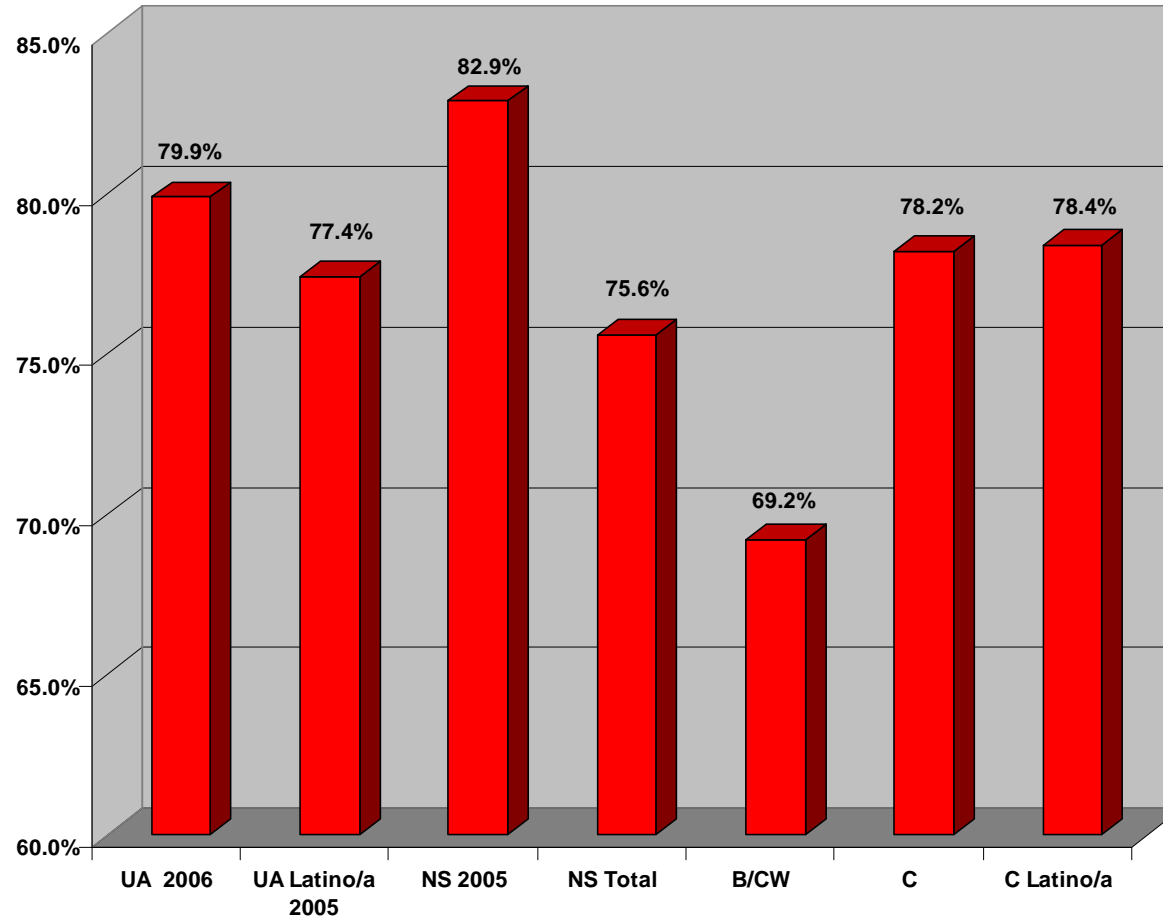
Research & Assessment

GPA Scaled



Research & Assessment

Retention Rates



Research & Assessment

Why do students participate?

“You get to meet new people, possibly make life long friends, get a class out of the way, get familiar with the campus and classes, get use to living in a dorm, talk with advisors, and get familiar with clubs on campus.”

“Because the early bird usually gets the worm. and this worm is going to take a while to get out...try 4 years!”



Research & Assessment

What did New Start students consider the most helpful part of the program?

“The interaction with different students and also with the professors was an awesome experience. I feel more comfortable getting out of my usual bubble and getting to know more people.”

“The workshops, hall programs, and tutoring services helped me the most.”

“Taking a college course and preparing me for the fall.”



Research & Assessment

Continuing Research

- Longitudinal study: Qualitative interviews, content analysis, pre / post survey
 - Additional variables
- Measures:
 - Pre-College Experiences
 - College-Choice Process
 - Transition to College
 - Cognitive & Social Cognitive
 - Democracy
 - Retention



newstart
SUMMER PROGRAM

Thank You!

Questions?



newstart

SUMMER PROGRAM

Multicultural Affairs and Student Success
The University of Arizona
mass.arizona.edu
(520) 621-1094

Judy Marquez Kiyama, Assistant Director, jkiyama@email.arizona.edu

Melissa Ousley, Ph.D., , Research Analyst, mousley@email.arizona.edu

Kendal Washington White, Director, kwashing@email.arizona.edu

